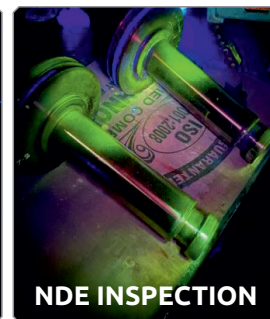
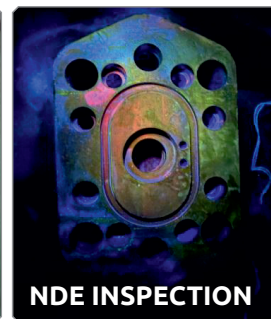
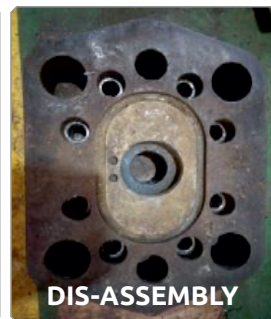
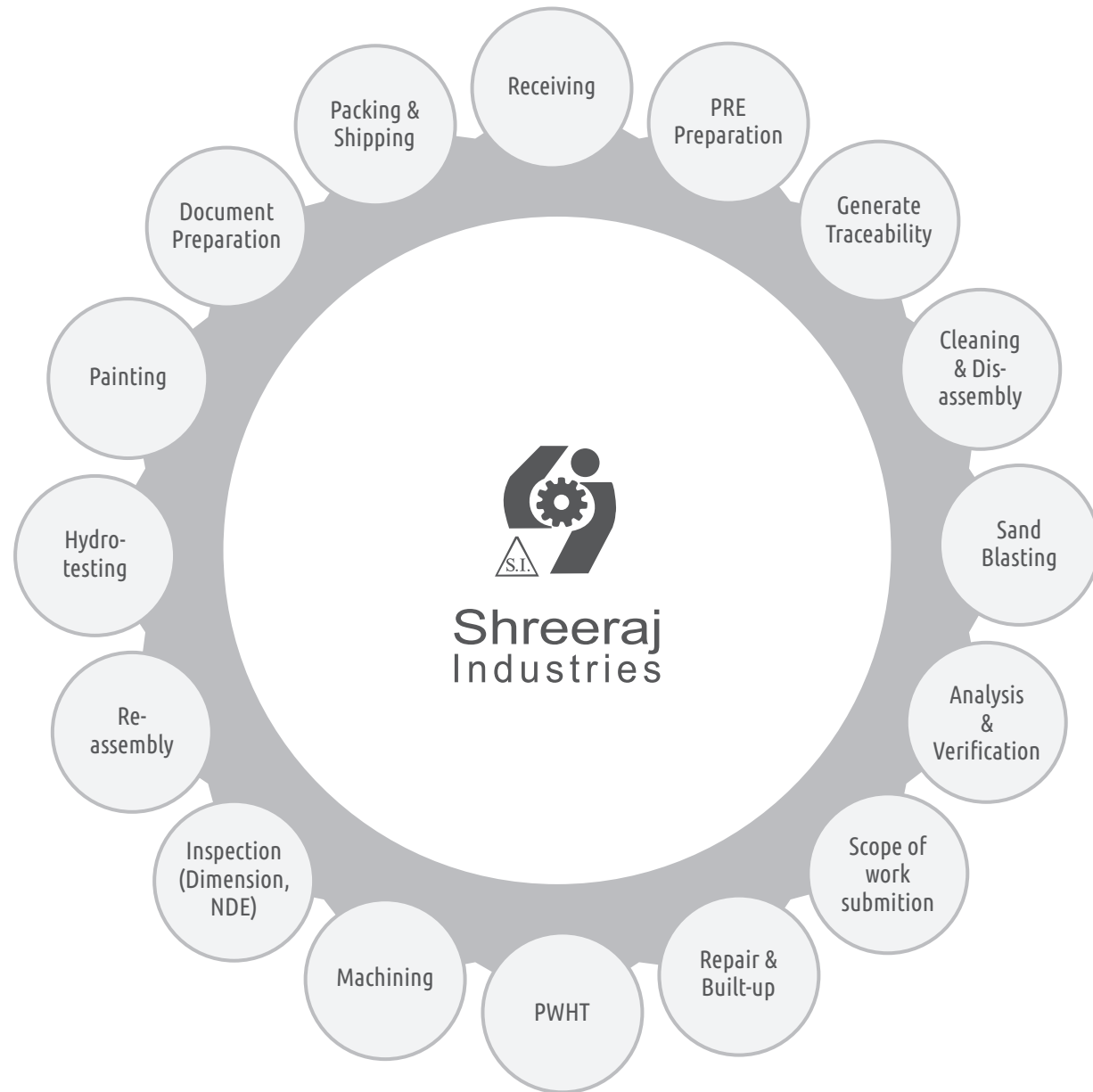


# REPAIR PROCESS

Scope of Blow Out Preventer, Repair, Service, Certification as per API 16AR



# WELLHEAD, MANIFOLD AND BLOW OUT PREVENTER REPAIR | RE-MANUFACTURE | SERVICE

Repair, Manufacture, Re-manufacture, Service & Certification of Oil Field Equipment, Choke & Kill Manifold as per AP6A & 16C and Blowout Preventer as per API 16AR



OFFSHORE



ONSHORE



DRILLING



FRAC

AN ISO CERTIFIED COMPANY



6A - 0611  
16A - 0534  
16C - 0026



**WORKS :** Block No. : 707 / A-2, Nandoli - Patia Road, Village : Rancharda - 382115, Taluka : Kalol, District : Gandhinagar, Gujarat - India. +91 94087 04749 | +91 99094 43680  
**OFFICE :** 1224, Shivalik Satyamev, Nr. Vakil Saheb Overbridge, Ambli Bopal Junction, Bopal, Ahmedabad - 380 058, Gujarat - India. +91 271 746 4045  
info@shreerajindia.com | www.shreerajindia.com





# REPAIR | RE-MANUFACTURE PROCESS

Repairs, Re-manufacture, inventory systems of all brands of wellhead equipment and valves, backed with a new equipment warranty give you, our customer, a single source advantage at Shreeraj Industries.



## RECEIVING

When a customer's wellhead equipment or production tree is brought in for repair or re-manufacturing, a unique customer property identification number & item number is issued. Using low stress stencils, the numbers are then permanently stenciled on the equipment. Documentation is maintained with each procedure & these identification numbers are recorded on all documentation. The conditions of the equipment is then evaluated and placed in prospective repair classes.



## DISASSEMBLY / CLEANING



Customer property is disassembled, cleaned by high-pressure-jet-cleaner and bead blasted.



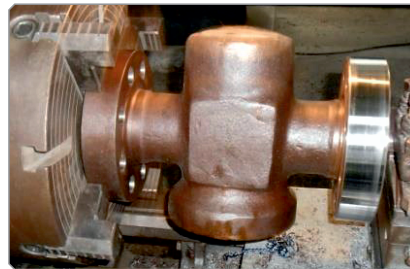
## INSPECTION

The equipment is visually and dimensionally inspected for defects, damage and excessive wear. All API specified dimensions are verified in accordance with the latest edition of API Specification 6A. Dimensional inspections are based on OEM specifications. NDE or MAG particle inspections & brinell hardness tests are conducted as necessary. Evaluation and test results are documented using the stenciled identification numbers



## ENGINEERING

Inspection reports are assigned to the engineering group. Engineering routes the wellhead equipment or production tree to be repaired or remanufactured to the proper department. Procurement is notified to purchase parts or raw materials as required.



## WELDING / MACHINING

As required, the wellhead equipment or valves are routed to the welding, stress relieving or machining areas. Highly experienced, qualified craftsmen combine metallurgy, welding & heat treating to obtain maximum results. Lathes, boring mills, radial drills, milling machines & grinding machines operated by experience machinists assure that all repaired or remanufactured equipment meets new equipment standards and conform to current API requirements.

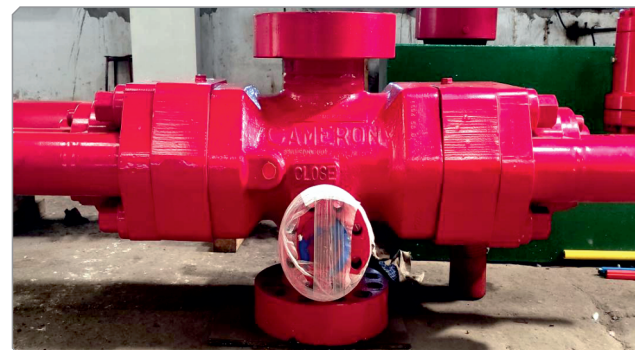


## PARTS INSPECTION

A quality assurance visual and dimensional verification inspection is conducted as required by the engineering router and customer specification. Equipment dimensional inspection is performed in accordance with API specification 6A, latest edition.



BEFORE

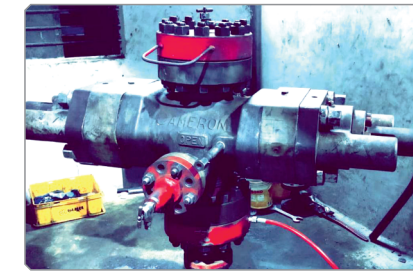


AFTER



## REASSEMBLY

Assembly and testing is performed to applicable drawings, specifications, standards, procedures and/or customer's instructions. Marking requirements conform to API will all original and previous equipment's markings retained.



## TESTING

All equipment is subjected to extensive hydraulic and hydrostatic performance tests as required to conform to API or OEM specifications. Test results are documented and chart recorded as applicable. These documents are maintained on file and available at our customers' request.

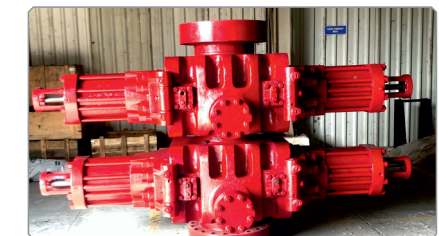


## FINAL INSPECTION

Inspections certify that repaired or remanufactured equipment meets new equipment standards and service requirements meeting or exceeding API standards.



## PAINTING



The like-new repaired or remanufactured equipment is painted or coated and made ready for shipment or storage per customers' specifications.



## READY FOR SHIPMENT

Equipment is drained and lubricated after hydrostatic testing and all openings are capped or plugged. This protects the equipment from dirt and foreign material prior to shipping or storage.



## WAREHOUSING & STORAGE

Repaired or remanufactured equipment is stored in an area designated for each customer's property ready for immediate use. Shreeraj Industries maintains a permanent record on all equipment held in storage.

Parts that were replaced are retained for upto 30 days. Customers have access to the retained parts before normal disposition is schedule.



BEFORE



AFTER