

WE ARE IN
OIL & GAS

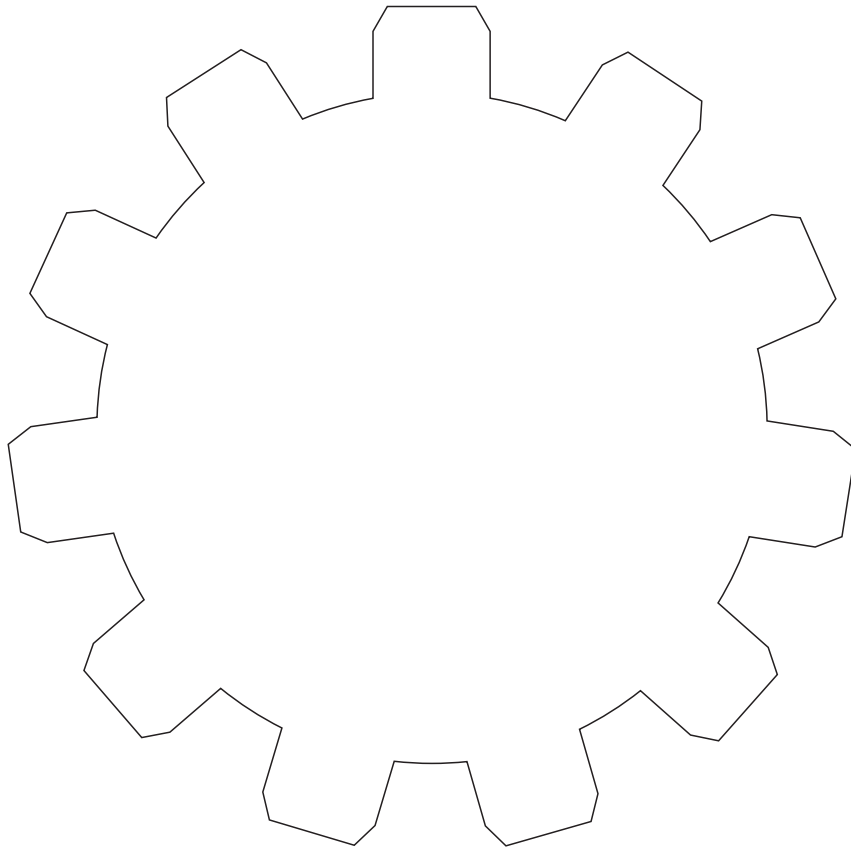




6A - 0611
16A - 0534
16C - 0026

**AN ISO CERTIFIED
COMPANY**

API Q1-4731



**Shreeraj
Industries**

WE ARE IN OIL & GAS



OFFSHORE



ONSHORE



DRILLING



FRAC



Shreeraj
Industries



THE COMPANY

SHREERAJ INDUSTRIES

Close to 5 decades, Shreeraj Industries has carved a niche in the Industrial Sector by proving to be a leading supplier of highly engineered and manufactured API surface wellhead equipments and components to the Oil and Gas industry. The main products of the company are Wellhead and Christmas Tree Equipments. But the company has also acquired engineering expertise in developing High Pressure Gate Valves, Choke Manifolds, Drilling and Spacer Spools, Flow line Equipments, Pipeline valves, and Machined components.

Shreeraj Industries has grown by leaps and bounds in terms of work and work-force. Started with merely 7 staff members, the Company today has a workforce of more than 200 people. The brain behind the business is that of Mr. Ravindra Shah who founded Shreeraj Industries in 1972. The traditional insight of Mr. Ravindra Shah and the Innovative foresight of his son Mr. Niraj Shah have blended fruitfully benefiting the customers. The company has bagged many accolades and is considered to be the most reliable in the Industry.

Shreeraj Industries has successfully engineered all equipments to meet the exact demands and requirements of the End Users and the Industry at large. Hence it has worked positively with world's top brands as contract and private label manufacturer.

FUTURE / EXPANSION

Shreeraj Industries continually expands its capabilities to include advanced technologies, premium processes and machinery equipments and a dedicated team of industry experts.

A Face-lift and Facility-Lift of the factory is underway. From 1.5 Acres, the fac-tory will expand to a whopping 10 Acres. The production capacity is expected to rise from 50 tonnes of finished weight per month to an enormous figure of 400 tonnes per month.

New and Hi-tech machinery will mark its entry with CNC Turning, Vertical Machining Center, Horizontal Machining Center and Robotic Welding Solutions.



STRENGTHS

Our team comprises of technically sound staff, skilled workers and dedicated Industry experts. This helps us in maintaining an active dialogue with our customers and in fulfilling their requests at the earliest. Our experience in this field proves our competence.



CORE VALUES

- INTEGRITY** : We believe that business can prosper only by being honest and transparent with the customers, employees and all others. We follow utmost ethical practices to meet the customer demands.
- COMMITMENT** : Our identity is to honour our deliverables on time.
- QUALITY** : Providing Quality equipments to our customers has been our hallmark since decades. We continue strive to exceed customer expectations in terms of quality and this will be the catalyst of our future success.

QUALITY ACCREDITATION



6A - 0611
16A - 0534
16C - 0026

API Q1-4731

Shreeraj Industries has all the necessary and needed certifications and follows a stringent quality check. Since 2002, Shreeraj Industries is an **API Monogram License Holder** for **6A, 16A** and **16C** indicating "Reliability" for more than 15 continuous Years. The other list of certifications it possesses is as under:

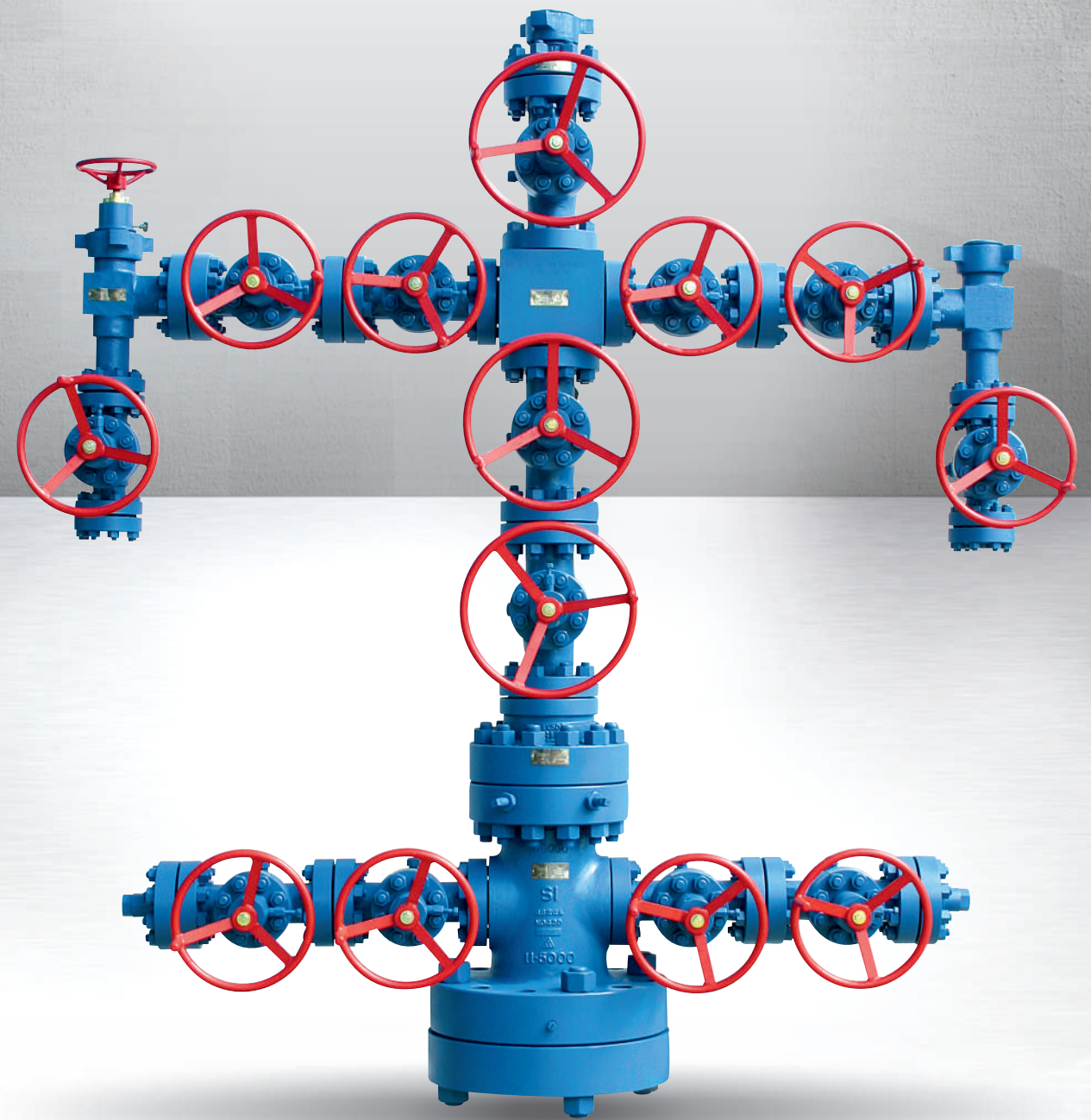
ISO-9001 | API Q1







WELLHEAD EQUIPMENTS





CASING HEADS / SPOOLS

- ✦ All Heads have standard API Flange
- ✦ Line pipe/ studed outlets
- ✦ API 6A, PSL 1 - 3, PR 1 - 2
- ✦ Slip-on weld, Slip-on weld, with 'O' ring & Threaded Bottom connections available.



TUBING HEADS / SPOOLS

- ✦ All heads have standard API flange
- ✦ Working pressure: 3M, 5M, 10M & 15M PSI
- ✦ Line Pipe/ studed outlets
- ✦ API 6A, PSL 1 - 3, PR 1 - 2



HANGERS & SLIPS

- ✦ Latch & Hinge heavy duty
- ✦ Pack off is automatic energized
- ✦ Available for all type of Standard Casing & Tubing heads
- ✦ Lift & Suspension threads are available
- ✦ Back pressure valves are available on request



TUBING HEAD ADOPTER

- ✦ Top & Bottom connections are available in various sizes
- ✦ Top connection are available in Studed / 8Rd/ ACME Threaded
- ✦ API 6A, PSL 1 - 3, PR 1 - 2



API 6A GATE VALVE EXPANDING GATE TYPE

- ✦ Size : 2 1/16" - 7 1/16"
- ✦ Working Pressure : 2M, 3M, & 5M PSI. PSL 1-3G, PR 1-2
- ✦ Material Class : AA - FF
- ✦ Temp. : K - V, Y High Temp.
- ✦ End : Threaded / Flanged
- ✦ Operation: Manual/ Hydraulic/ Pneumatic actuated



API 6A GATE VALVE SLAB GATE TYPE

- ✦ Size : 1 13/16" - 7 1/16"
- ✦ Working Pressure : 5M, 10M & 15M PSI. PSL 1-3G, PR 1-2
- ✦ Material Class : AA - FF. Temp. : K - V
- ✦ End : Flanged
- ✦ Operation : Manual / Hydraulic / Pneumatic actuated



CHECK VALVE

- ✦ Size : 2 1/16" - 3 1/16"
- ✦ Working pressure : 2M, 3M, 5M & 10M PSI
- ✦ Low maintenance operations
- ✦ End : Flanged / Threaded / Hammer Union



MUD GATE VALVE

- ✦ Size : 2", 3" & 4"
- ✦ Working pressure : 2M, 3M & 5M PSI
- ✦ Heavy duty performance in abrasive service condition
- ✦ End : Threaded/ Buttweld/ Flanged



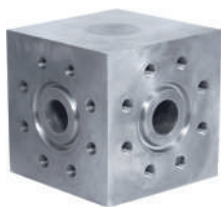
PRODUCTION CHOKER

- ✦ Type : Adjustable & Positive
- ✦ Size : 1 13/16" - 4 1/16"
- ✦ Working pressure : 2M, 3M, 5M & 10M PSI
- ✦ End : Threaded / Flanged



TREE CAP/ BHTA

- ✦ Quick Access to Tubing Bore
- ✦ Size : 2 1/16" - 4 1/16"
- ✦ Working pressure : 2M, 3M, 5M, 10M & 15M PSI



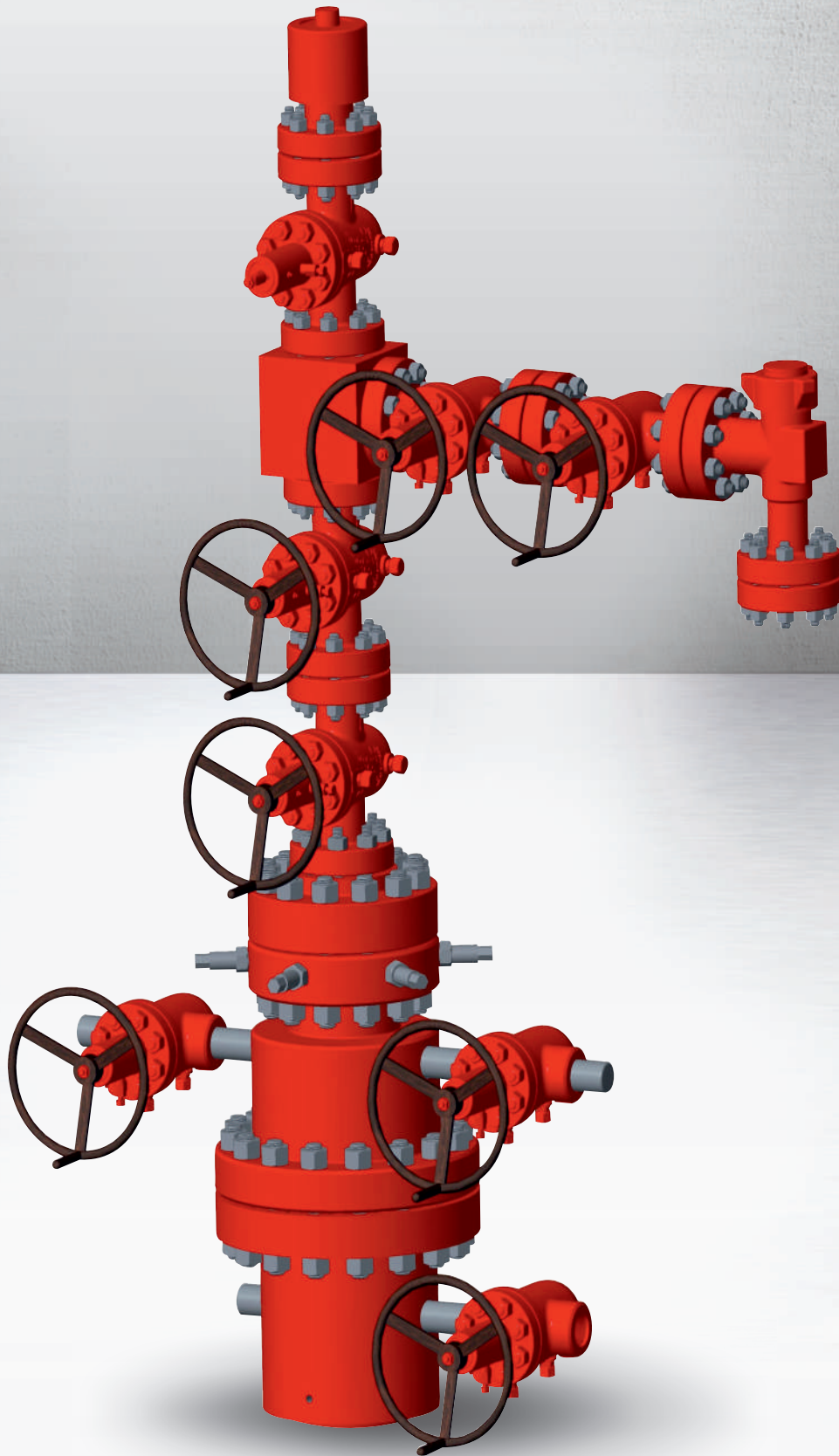
CROSSES & TEES

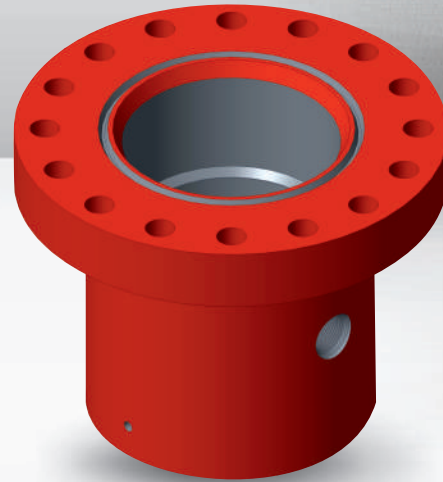
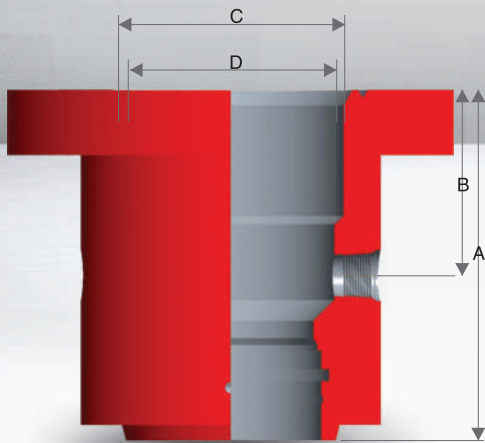
- ✦ Standard API 6A Flanges
- ✦ End : Flanged / Studded

ACCESSORIES



WELLHEAD ASSEMBLY





Shreeraj Industries's casing head feature a versatile straight bore design that can accept a wide variety of slip and mandrel type casing hangers.

STRAIGHT-BORE DESIGN

- ◆ Features a 45° landing shoulder capable of supporting maximum loads
- ◆ Prevents test plugs from wedging under pressure

LOCK SCREWS

- ◆ Casing heads are supplied with two lock screws for wear bushing retention
- ◆ Casing head are supplied with full set of lock screws for mandrel casing hanger & pack off retention.

OUTLETS

- ◆ Line Pipe Outlets
- ◆ Studded Side Outlets
- ◆ Extended Flanged Outlets

BOTTOM CONNECTIONS

- ◆ Slip-on Weld
- ◆ with O-ring
- ◆ Threaded

CASING HANGER COMPATIBILITY

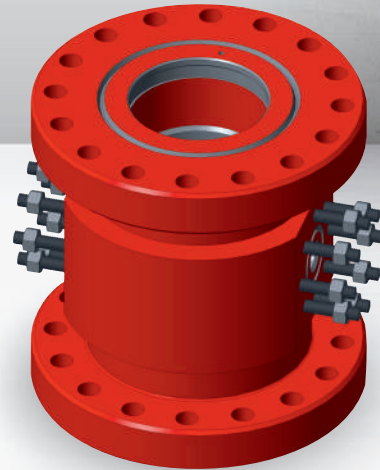
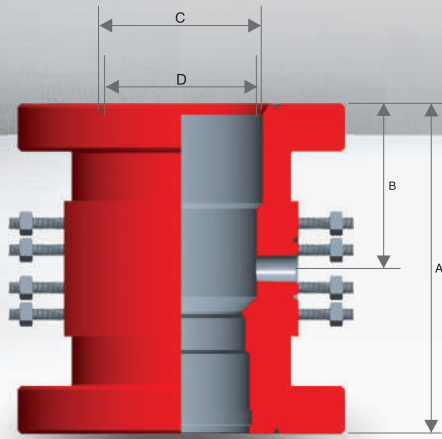
- ◆ Slip type casing hangers
- ◆ Mandrels style casing hangers

MANUFACTURING STANDARD

- ◆ API 6A, PSL 3, PR-2

AVAILABILITY | ADDITIONAL SIZES AVAILABLE UPON REQUEST

FLANGE SIZE	WORKING PRESSURE	CASING SIZE	A	B	C	D
11"	3,000	8.5/8"	17"	10.1/8"	10.7/8"	8"
11"	3,000	9.5/8"	17"	10.1/8"	10.7/8"	9"
11"	3,000	10.3/4"	16"	10.1/8"	10.7/8"	10"
11"	5,000	8.5/8"	17"	10.1/2"	10.7/8"	8"
11"	5,000	9.5/8"	17"	10.1/2"	10.7/8"	9"
11"	5,000	10.3/4"	17"	10.1/2"	10.7/8"	10"
13.5/8"	2,000	11.3/4"	17"	10.1/4"	13.1/2"	11"
13.5/8"	2,000	13.3/8"	16"	10.1/4"	13.1/2"	12.1/2"
13.5/8"	3,000	11.3/4"	17"	10.1/4"	13.1/2"	11"
13.5/8"	3,000	13.3/8"	17"	10.1/4"	13.1/2"	12.1/2"
13.5/8"	5,000	13.3/8"	19"	10.1/4"	13.1/2"	12.3/8"
16.3/4"	2,000	13.3/8"	19"	10.1/2"	16.5/8"	12.1/2"
16.3/4"	2,000	16"	19"	10.1/2"	16.5/8"	15.1/4"
16.3/4"	3,000	13.3/8"	20"	10.5/8"	16.5/8"	12.1/2"
16.3/4"	3,000	16"	20"	10.5/8"	16.5/8"	15"
21.1/4"	2,000	18.5/8"	20"	10.1/4"	20.1/8"	18"
21.1/4"	2,000	20"	20"	10.1/4"	20.1/8"	19"
20.3/4"	3,000	18.5/8"	23"	15"	20.1/8"	18"
21.1/4"	3,000	20"	23"	15"	20.1/8"	19"



Shreeraj Industries's casing spools feature a versatile straight bore design that can accept a wide variety of slip and mandrel type casing hangers.

STRAIGHT-BORE DESIGN

- ◆ Features a 45° landing shoulder capable of supporting maximum loads
- ◆ Prevents test plugs from wedging under pressure

LOCK SCREWS

- ◆ Casing spools are supplied with two lock screws for wear bushing retention
- ◆ Casing spools are supplied with full set of lock screws for mandrel casing hanger & pack off retention

OUTLETS

- ◆ Line Pipe ◆ Studded Side Outlets ◆ Extended Flanged Outlets

BOTTOM CONNECTIONS

- ◆ PE/BG bottom, for use with PE secondary seal bushing
- ◆ HPE bottom, for use with HPE secondary seal bushing for high pressure applications

CASING HANGER COMPATIBILITY

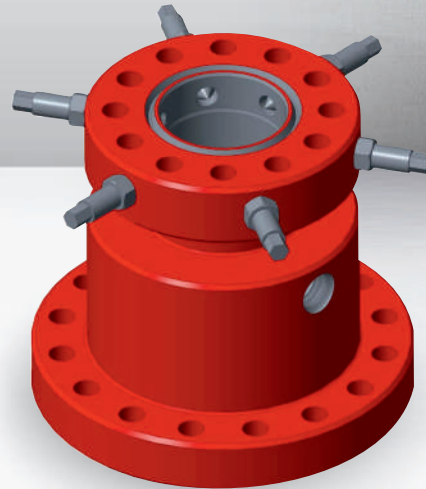
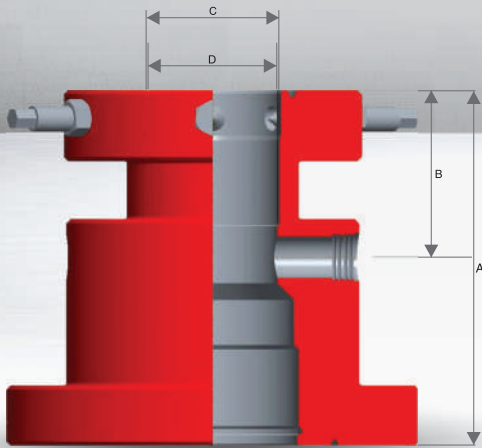
- ◆ Slip type casing hangers
- ◆ Mandrel style casing hangers

MANUFACTURING STANDARD

- ◆ API 6A, PSL 3, PR-2

AVAILABILITY | ADDITIONAL SIZES AVAILABLE UPON REQUEST

BOTTOM FLANGE SIZE	WORKING PRESSURE	TOP FLANGE SIZE	WORKING PRESSURE	OUTLET STUDED	A	B	C	D
11"	3,000	11"	3,000	2.1/16"	20.5/8"	10.1/4"	10.7/8"	10"
11"	3,000	11"	5,000	2.1/16"	22.1/4"	12.3/4"	10.7/8"	10"
11"	5,000	11"	5,000	2.1/16"	23.7/8"	12.3/4"	10.7/8"	10"
11"	5,000	11"	10,000	1.13/16"	24.3/4"	13.5/8"	10.7/8"	10"
11"	10,000	11"	10,000	1.13/16"	25.5/8"	14.1/2"	10.7/8"	10"
13.5/8"	2,000	11"	3,000	2.1/16"	19.1/2"	10.1/4"	10.7/8"	10"
13.5/8"	3,000	11"	3,000	2.1/16"	22.5/8"	10.1/4"	10.7/8"	10"
13.5/8"	3,000	13.5/8"	3,000	2.1/16"	23"	10.5/8"	13.1/2"	12.1/2"
13.5/8"	3,000	11"	5,000	2.1/16"	25.1/4"	12.3/4"	10.7/8"	10"
13.5/8"	3,000	13.5/8"	5,000	2.1/16"	25.1/4"	12.1/8"	13.1/2"	12.3/8"
13.5/8"	5,000	11"	5,000	2.1/16"	25.1/8"	12.3/4"	10.7/8"	10"
13.5/8"	5,000	11"	10,000	1.13/16"	26"	13.1/2"	10.7/8"	9"
16.3/4"	2,000	11"	3,000	2.1/16"	17.1/4"	10.1/4"	10.7/8"	10"
16.3/4"	3,000	11"	3,000	2.1/16"	17.7/8"	10.1/4"	10.7/8"	10"
16.3/4"	3,000	11"	5,000	2.1/16"	24.5/8"	13.1/2"	10.7/8"	10"
16.3/4"	3,000	13.5/8"	3,000	2.1/16"	24.1/2"	10.5/8"	13.1/2"	12.1/2"
16.3/4"	3,000	13.5/8"	5,000	2.1/16"	25.1/2"	12.1/8"	13.1/2"	12.3/8"
21.1/4"	2,000	13.5/8"	3,000	2.1/16"	26.3/4"	10.5/8"	13.1/2"	12.1/2"
20.3/4"	3,000	13.5/8"	3,000	2.1/16"	27.5/8"	10.5/8"	13.1/2"	12.1/2"
20.3/4"	3,000	13.5/8"	5,000	2.1/16"	28.5/8"	12.1/8"	13.1/2"	12.3/8"



Shreeraj Industries's tubing head features a versatile straight bore design for single and multiple completions. This design accepts all tubing hanger series and easily converts from single completion to multiple completion with the addition and alignment pin or pins.

AVAILABLE SIZES

- ◆ Available with 7.1/16" nominal bowl compatible with 7.5/8" production casing, 9" nominal bowl compatible with 8.5/8" production casing
- ◆ Straight-Bore Design
- ◆ Features a 45° landing shoulder capable of supporting maximum loads Tubing Hanger Compatibility
- ◆ Tubing Heads accept a wide variety of tubing hanger style including mandrel and wrap around

OUTLETS

- ◆ Line Pipe Outlets ◆ Studded Side Outlets

BOTTOM PREPARATIONS

- ◆ PE/BG bottom, for use with PE secondary seal bushing
- ◆ HPE bottom, for use with HPE secondary seal bushing for high pressure applications

MANUFACTURING STANDARD

- ◆ API 6A, PSL 3, PR-2

AVAILABILITY | ADDITIONAL SIZES AVAILABLE UPON REQUEST

BOTTOM FLANGE SIZE	WORKING PRESSURE	TOP FLANGE SIZE	WORKING PRESSURE	OUTLET STUDDED	A	B	C	D
9"	2,000	7.1/16"	2,000	2.1/16"	16.11/16"	8.7/16"	7"	6.3/8"
9"	2,000	7.1/16"	3,000	2.1/16"	17"	9.3/4"	7"	6.3/8"
9"	3,000	7.1/16"	2,000	2.1/16"	18.13/16"	9.3/4"	7"	6.3/8"
11"	2,000	7.1/16"	2,000	2.1/16"	16.11/16"	8.7/16"	7"	6.3/8"
11"	2,000	7.1/16"	3,000	2.1/16"	17"	9.5/8"	7"	6.3/8"
11"	2,000	9"	3,000	2.1/16"	17"	9.9/16"	9"	8"
11"	3,000	7.1/16"	3,000	2.1/16"	17"	9.3/4"	7"	6.3/8"
11"	3,000	9"	3,000	2.1/16"	16"	9.3/16"	9"	8"
11"	3,000	7.1/16"	5,000	2.1/16"	17"	10.7/8"	7"	6.3/16"
11"	3,000	9"	5,000	2.1/16"	17"	11.9/16"	9"	8"
11"	5,000	7.1/16"	5,000	2.1/16"	19"	10.7/8"	7"	6.3/16"
11"	5,000	9"	5,000	2.1/16"	19"	11.9/16"	9"	8"
11"	5,000	7.1/16"	10,000	1.13/16"	19"	10.3/4"	7"	6.3/16"
11"	5,000	9"	10,000	1.13/16"	20"	11.9/16"	9"	8"
11"	10,000	7.1/16"	10,000	1.13/16"	24.1/4"	11"	7"	6.3/16"
11"	10,000	9"	10,000	1.13/16"	24.1/4"	11"	9"	8"
11"	10,000	7.1/16"	15,000	1.13/16"	26.1/2"	12.1/8"	7"	6.3/16"
11"	10,000	9"	15,000	1.13/16"	25.1/8"	14"	7"	8"
13.5/8"	2,000	7.1/16"	2,000	2.1/16"	18"	8.7/16"	7"	6.3/8"
13.5/8"	2,000	7.1/16"	3,000	2.1/16"	20.11/16"	9.3/4"	7"	8"
13.5/8"	3,000	7.1/16"	3,000	2.1/16"	20.7/16"	9.3/4"	7"	6.3/8"
13.5/8"	3,000	7.1/16"	5,000	2.1/16"	21.9/16"	10.7/8"	7"	6.3/8"
13.5/8"	3,000	11"	5,000	2.1/16"	23.5/8"	12.15/16"	11"	10"

CASING HANGERS



Shreeraj Industries's automatic casing hangers (wrap around) incorporate a lower pack off, slip bowl, and slips. The lower pack off is energized by the weight of the casing which provides a positive annular seal.

FEATURES

- ◆ Heavy duty latch hinge
- ◆ Latch cap screw prevents accidental opening of hanger
- ◆ Minimum number of parts
- ◆ Pack off is automatically energized with casing weight

SECONDARY SEALS

Shreeraj Industries's PE secondary seal is inserted in the bottom preparation of a casing spools or tubing spool and retained with a snap wire. The seal is energized when the spool is installed over the casing stub and the flange connection is made up.

Shreeraj Industries's HPE secondary seal is designed for high pressure applications. The bottom compression plate is threaded and is inserted in the bottom preparation of casing spools or tubing spools with threaded preparations.

FLANGE SIZE	TUBING SIZE	FLANGE SIZE	TUBING SIZE
9"	4.1/2"	13.5/8"	7"
9"	5"	13.5/8"	7.5/8"
9"	5.1/2"	13.5/8"	8.5/8"
11"	4.1/2"	13.5/8"	9.5/8"
11"	5"	13.5/8"	10.3/4"
11"	5.1/2"	16.3/4"	9.5"/8
11"	7"	16.3/4"	10.3/4"
11"	7.5/8"	21.1/4"	13.3/8"

Additional sized available upon request

TUBING HANGERS

WRAP-AROUND TUBING HANGER

Reliable compression seal controls annulus pressure during Christmas Tree installation.

FLANGE SIZE	7.1/16"	7.1/16"	7.1/16"
TUBING SIZE	2.3/8"	2.7/8"	3.1/2"

Additional sized available upon request

MANDREL TUBING HANGER

Reliable compression seal controls annulus pressure during Christmas Tree installation. Lift and suspension threads are available in standard tubing sized and threads, Threaded type H back pressure valve preparation also available.

FLANGE SIZE	7.1/16"	7.1/16"	7.1/16"
TUBING SIZE	2.3/8"	2.7/8"	3.1/2"

Additional sized available upon request

EXTENDED NECK TUBING HANGER

Annular seal is lock screw energized. Reliable compression seal controls annulus pressure during Christmas Tree installation. Lift and suspension threads are available in standard tubing sized and threads. Threaded type H back pressure valve preparation standard. Neck seals on tubing hanger provide reliable annulus sealing and isolate DHCV lines.

FLANGE SIZE	7.1/16"	7.1/16"	7.1/16"
TUBING SIZE	2.3/8"	2.7/8"	3.1/2"

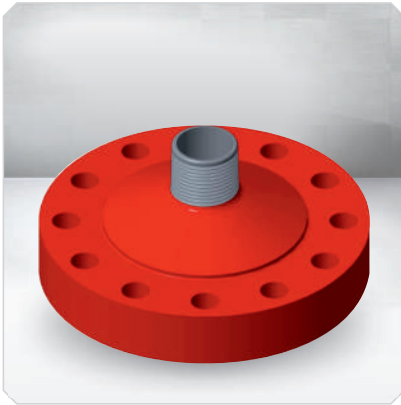
Additional sized available upon request

COUPLING

Course ACME OD thread makes up easily with minimum risk of damage. Lift and suspension threads are available in standard tubing sizes and threads. Threaded type H back pressure valve preparation is standard.

FLANGE SIZE	4"	4"	5"
TUBING SIZE	2.3/8"	2.7/8"	3.1/2"

Additional sized available upon request



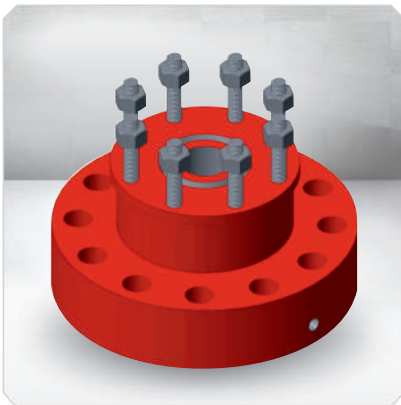
B-1 TUBING HEAD ADAPTER

FLANGE SIZE	WORKING PRESSURE	THREADED TOP	SUSPENSION THREAD
7.1/16"	3000	2.3/8" UP Tubing	2.3/8" UP Tubing
7.1/16"	3000	2.7/8" UP Tubing	2.7/8" UP Tubing
7.1/16"	5000	2.3/8" UP Tubing	2.3/8" UP Tubing
7.1/16"	5000	2.7/8" UP Tubing	2.7/8" UP Tubing



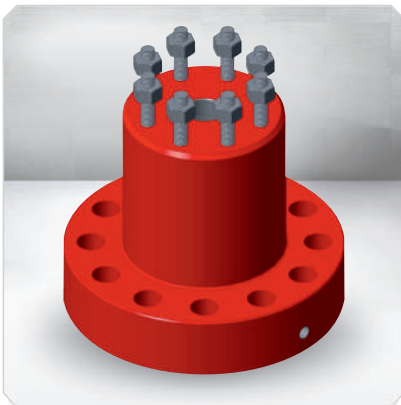
B2P TUBING HEAD ADAPTER

FLANGE SIZE	WORKING PRESSURE	THREADED TOP	SUSPENSION THREAD
7.1/16"	3000	2.1/16" 5000	2.3/8" UP Tubing
7.1/16"	3000	2.9/16" 5000	2.7/8" UP Tubing
7.1/16"	3000	3.1/8" 5000	3.1/2" UP Tubing
7.1/16"	5000	2.1/16" 5000	2.3/8" UP Tubing
7.1/16"	5000	2.9/16" 5000	2.7/8" UP Tubing
7.1/16"	5000	3.1/8" 5000	3.1/2" UP Tubing



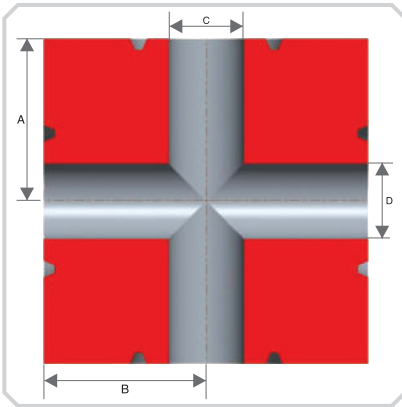
ASP- EN TUBING HEAD ADAPTER

FLANGE SIZE	WORKING PRESSURE	THREADED TOP	SUSPENSION THREAD
7.1/16"	5000	2.1/16"	5000
7.1/16"	5000	2.9/16"	5000
7.1/16"	5000	3.1/8"	5000
7.1/16"	10000	2.1/16"	10000
7.1/16"	10000	2.9/16"	10000
7.1/16"	10000	3.1/8"	10000



BO-2 TUBING HEAD ADAPTER

FLANGE SIZE	WORKING PRESSURE	THREADED TOP	SUSPENSION THREAD
7.1/16"	3000	2.1/16"	5000
7.1/16"	3000	2.9/16"	5000
7.1/16"	3000	3.1/8"	5000
7.1/16"	5000	2.1/16"	5000
7.1/16"	5000	2.9/16"	5000
7.1/16"	5000	3.1/8"	5000



CROSSES & TEES

RUN SIZE	WORKING PRESSURE	OUTLET SIZE	WORKING PRESSURE	A	B	C	D
2.1/16"	5000	2.1/16"	5000	4.50"	4.50"	2.06"	2.06"
2.9/16"	5000	2.1/16"	5000	4.50"	5.00"	2.56"	2.56"
2.1/16"	10000	1.13/16"	10000	4.38"	4.38"	2.06"	1.81"
2.1/16"	10000	2.1/16"	10000	4.38"	4.38"	2.06"	2.06"
2.9/16"	10000	1.13/16"	10000	4.50"	5.12"	2.56"	1.81"
3.1/16"	10000	1.13/16"	10000	4.50"	5.88"	3.06"	1.81"
4.1/16"	10000	1.13/16"	10000	6.50"	6.50"	4.06"	1.81"

BHTA / TREE CAPS

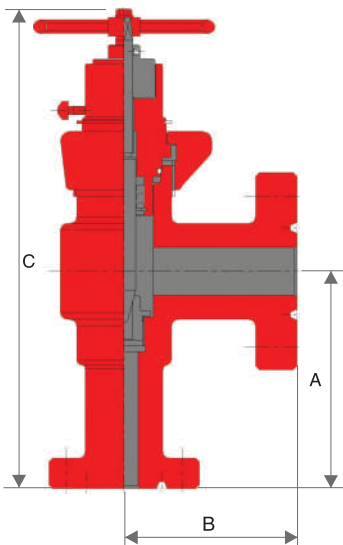
FLANGE SIZE	WORKING PRESSURE	LIFT THREADS	BORE
2.1/16"	2000	2.3/8" UP Threading	2.1/16"
2.1/16"	5000	2.3/8" UP Threading	2.1/16"
2.9/16"	2000	2.3/8" UP Threading	2.9/16"
2.9/16"	5000	2.3/8" UP Threading	2.9/16"
3.1/8"	2000	2.3/8" UP Threading	3.1/8"
3.1/8"	3000	2.3/8" UP Threading	3.1/8"
3.1/8"	5000	2.3/8" UP Threading	3.1/8"
4.1/16"	3000	2.3/8" UP Threading	4.1/16"
4.1/16"	5000	2.3/8" UP Threading	4.1/16"

TREE CAPS B-11-AO

FLANGE SIZE	WORKING PRESSURE	LIFT THREADS	BORE
2.1/16"	10000	2.3/8" UP Tubing	2.1/16"
2.1/16"	15000	2.3/8" UP Tubing	2.1/16"
2.9/16"	10000	2.7/8" UP Tubing	2.9/16"
2.9/16"	15000	2.7/8" UP Tubing	2.9/16"
3.1/16"	10000	3.1/2" UP Tubing	3.1/16"
3.1/16"	15000	3.1/2" UP Tubing	3.1/16"
4.1/16"	10000	4.1/2" UP Tubing	4.1/16"

CHOKES

Shreeraj Industries's adjustable and positive production chokes are designed for reliable flow control and maximum wear life. Shreeraj Industries's chokes are available in flanged or threaded ends in standard bore sizes from 1.13/16" thru 4.1/16", in working pressures of 2,000 PSI through 10,000 PSI.



CONFIGURATION	INLET	WORKING PRESSURE	OUTLET SIZE	A	B	C	D
WN-62	2.1/16"	2000	2.1/16"	2000	9.38"	5.88"	24.38"
	2.1/16"	5000	2.1/16"	5000	9.38"	7.50"	24.38"
WT-1	2.1/16"	2000	2.1/16"	2000	9.38"	5.88"	14.50"
	2.1/16"	5000	2.1/16"	5000	9.38"	7.50"	13.88"
W-JWA	1.13/16"	10000	1.13/16"	10000	9.19"	7.50"	21.06"
	2.1/16"	10000	2.1/16"	10000	9.38"	7.50"	21.38"
	1.13/16"	15000	1.13/16"	15000	10.12"	7.38"	26.06"
WPC	2.1/16"	15000	2.1/16"	15000	9.38"	8.69"	26.00"
	1.13/16"	10000	1.13/16"	10000	9.19"	7.50"	14.12"
	2.1/16"	10000	2.1/16"	10000	9.38"	7.50"	16.31"
	1.13/16"	15000	1.13/16"	15000	10.12"	7.38"	18.88"
	2.1/16"	15000	2.1/16"	15000	9.38"	8.69"	18.62"

LOW PRESSURE WELLHEADS



TUBING HEAD (TUBING SLIP FLANGE)



TUBING HEAD (MANDREL HANGER)



2000 - 3000 PSI WORKING PRESSURE TUBING HEAD BODY

TOP CONNECTION	BOTTOM CONNECTION	OUTLETS	WORKING PRESSURE
7.1/16" - 2000 Flange	4.1/2" Female Casing Thread	2" LP	2000 PSI
7.1/16" - 2000 Flange	5.1/2" Female Casing Thread	2" LP	2000 PSI
7.1/16" - 2000 Flange	7" Female Casing Thread	2" LP	2000 PSI
7.1/16" - 3000 Flange	4.1/2" Female Casing Thread	2" LP	3000 PSI
7.1/16" - 3000 Flange	5.1/2" Female Casing Thread	2" LP	3000 PSI
7.1/16" - 3000 Flange	7" Female Casing Thread	2" LP	3000 PSI

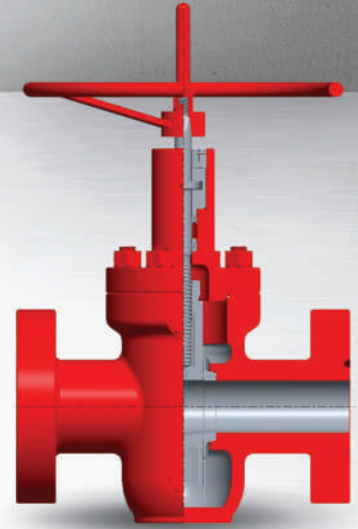
* One piece steel body

TOP CONNECTION	BOTTOM CONNECTION	OUTLETS	WORKING PRESSURE
8.5/8" - Male Thread	4.1/2" Female Casing Thread	2" LP	3000 PSI
8.5/8" - Male Thread	4.1/2" Male Casing Thread	2" LP	3000 PSI
8.5/8" - Male Thread	4.1/2" OD Slip Joint	2" LP	3000 PSI
8.5/8" - Male Thread	5.1/2" Female Casing Thread	2" LP	3000 PSI
8.5/8" - Male Thread	5.1/2" Male Casing Thread	2" LP	3000 PSI
8.5/8" - Male Thread	5.1/2" OD Slip Joint	2" LP	3000 PSI
8.5/8" - Male Thread	6.5/8" Female Casing Thread	2" LP	3000 PSI
8.5/8" - Male Thread	6.5/8" Male Casing Thread	2" LP	3000 PSI
8.5/8" - Male Thread	7" Female Casing Thread	2" LP	3000 PSI
8.5/8" - Male Thread	7" Male Casing Thread	2" LP	3000 PSI
8.5/8" - Male Thread	7" OD Slip Joint	2" LP	3000 PSI

* One piece steel body

TUBING HANGER MANDREL					
TOP CONNECTION	EUE 8RD Tubing Thread	2.3/8"	2.7/8"	3.1/2"	4.1/2"
BOTTOM CONNECTION	EUE 8RD Tubing Thread	2.3/8"	2.7/8"	3.1/2"	4.1/2"
MATERIAL		Steel	Steel	Steel	Steel

M GATE VALVE



Shreeraj Industries's M Gate Valve features a non rising stem with an expanding gate design to provide safe, dependable service in variety of environments. It is available in flanged or threaded ends in standard bore size from 2.1/16" through 4.1/16" in working pressure of 2,000 PSI through 5,000 PSI.

Shreeraj Industries's M gate valves in sizes 5.1/8" and 7.1/16" in working pressure of 2,000 PSI through 5,000 PSI working pressure are available upon request.

FULL-BORE THRU-CONDUIT DESIGN

- ◆ Maximizes valve service life
- ◆ Eliminates the collection of destructive particles Expanding Gate
- ◆ Procedures a positive mechanical seal across the seats
- ◆ Isolates the body cavity from bore pressure in both the open and closed position
- ◆ In-line Repairability
- ◆ Stem packing is re-energized while the valve is under pressure
- ◆ Long Life, Low Maintenance
- ◆ Simple routine maintenance program limits repairs, eases operation, products against corrosion and extends the service life

GEOHERMAL APPLICATION FEATURES

- ◆ Pressure Fit Seats
- ◆ Press fit seats allow the seats to be tightly wedged into the seat pockets in the open or closed position
- ◆ Metal-to-Metal Seals
- ◆ Body/Bonnet interface, and gate/seat interface

MATERIAL CLASS : AA-FF

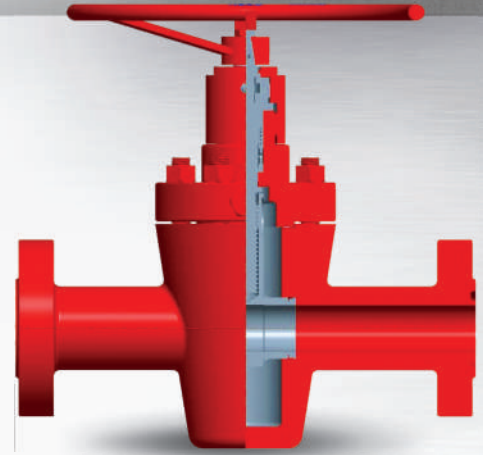
TEMP. RATING : K - V, Y High Temp.

PSL RATING : PSL 1-3G

PR RATING : PR 1-2

ENDS : Threaded / Flanged

OPERATION : Manual / Hydraulic / Pneumatic actuated



Shreeraj Industries's FC gate valve features a non-rising stem with slab gate, floating seat ring body bushing design to provide safe dependable service. It is available in flanged or threaded ends in standard bore size from 1.13/16" thru 4.1/16" in working pressure of 5,000 psi thru 15,000 psi wp.

Shreeraj Industries's FC gate valves in sizes 5.1/8" and 7.1/16" in working pressures of 10,000 psi and 15,000 psi working pressure are available upon request.

FULL-BORE THRU-CONDUIT DESIGN

- ◆ Maximizes valve service life
- ◆ Eliminates the collection of destructive particles
- ◆ Floating Slab Gate and Seats
- ◆ Produces a positive pressure energized seal
- ◆ Body pressure equalizes across the seat ring/ body bushing, eliminating body erosion in the seat pockets
- ◆ Metal-to-Metal Backseat
- ◆ Allows for body pressure containment in the case of stem packing leak
- ◆ Metal-to-Metal Seals
- ◆ Body/bonnet interface, gate/seat ring/ body bushing interfaces, body/body bushing interface
- ◆ Low Life, Low Maintenance

- ◆ Simple routine maintenance program limits repairs, eases operation, protects against corrosion and extends service life
- ◆ In-line Repairability
- ◆ Seat rings, body bushings, gate, stem are easily replaced in the field

MATERIAL CLASS : AA-FF

TEMP. RATING : K - V, X

PSL RATING : PSL 1-3G

PR RATING : PR 1-2

ENDS : Flanged

OPERATION : Manual / Hydraulic actuated



Shreeraj Industries's mud gate valves features a rising stem with a "T" slotted slab gate and unique seat design features dependable, heavy duty performance in abrasive services conditions. It is available in flanged, butt weld, or threaded ends in standard bore sizes from 2" thru 5", in working pressures from 2,000 psi through 5,000 psi.

- ✦ Flexible Trims
- ✦ Double Acting thread Design
- ✦ Double acting thread design ensures fast operation Interchangeability
- ✦ Interchangeable with the most commonly supplied valves in the field today
- ✦ In-line Repairability
- ✦ Bonnet is easily removed for internal parts inspection and /or replacement
- ✦ Simple design allows fast and easy service
- ✦ No special tools are required

MATERIAL CLASS : AA-EE

TEMP. RATING : P - V

PSL RATING : PSL 1-3

PR RATING : PR 1

ENDS : Flanged / Screwed / Butt weld

OPERATION : Manual

PISTON PNEUMATIC ACTUATOR GATE VALVE

FOR API 6A WELLHEAD



GENERAL DESCRIPTION

Shreeraj's Piston Pneumatic Actuator is a pneumatically powered piston type actuator with an integrated manual override. The actuator utilizes pressure acting on a movable piston to move the bonnet stem and gate to the operating position. When actuator control pressure is removed, valve pressure acting on the bonnet stem moves the gate to the normal position, closed for reverse acting and open for direct acting gate valves. A heavy duty spring ensures complete valve stroke in the absence of valve body pressure. Shreeraj manufactures the widest range of API monogrammed Piston Pneumatic Actuators in the industry. The Piston actuator is currently available in two size for valves with up to a 1.13/16" and 2.1/16" bore and working pressures from 2,000 to 10,000 psi. Piston Pneumatic actuators are only delivered as complete actuated valve assemblies or as replacement actuator and bonnet assemblies designed to mount on valves.

FEATURES AND BENEFITS

LONGER TOP SHAFT SEAL LIFE

Polypak seals are used for actuator shaft sealing applications. These seals are protected from accumulation of dirt and debris by a durable wiper ring. These two features provide long seal life and minimal maintenance.

EASY MAINTENANCE

The Actuator is easy to maintain. The Actuator design allows for easy removal of the piston housing for piston and shaft seal replacement.

IMPROVED CORROSION CONTROL

All non-stainless components are coated with Xylan or powder providing resistance against the corrosive effect of harsh environments.

OVER-PRESSURIZATION PROTECTION

A pressure relief device located on the Actuator top case protects personnel from over pressurization of the actuator assembly. It is located for easy field inspection & replacement.

CONFIRMATION OF BONNET STEM / BACK SEAT SEAL INTEGRITY

The bonnet is designed with a test fitting below the bonnet packing seals. This test fitting provides for verification of the bonnet stem metal to metal back seat pressure sealing integrity.

FLEXIBLE ADAPTION

The Actuator can be mounted on the secondary master or wellhead flow wing. The actuator can be mounted at any point where safety shut down or safety valves are required.

EASY CLOSING

The Actuator can manually open the gate valve in case of pneumatic control pressure loss or mechanical failure without assistance of an outside pressure source.

VISUAL CONFIRMATION OF BONNET PACKING

A tattletale port located above the bonnet packing seals provides visual confirmation of the packing integrity.

PNEUMATIC CONTROL SUPPLY

The piston pneumatic actuator operates at a maximum of 250 psi.

FAIL SAFE OPERATION

The Piston Pneumatic Actuators will close a gate valve to the "Fail Safe" or "Fail Close" position automatically.

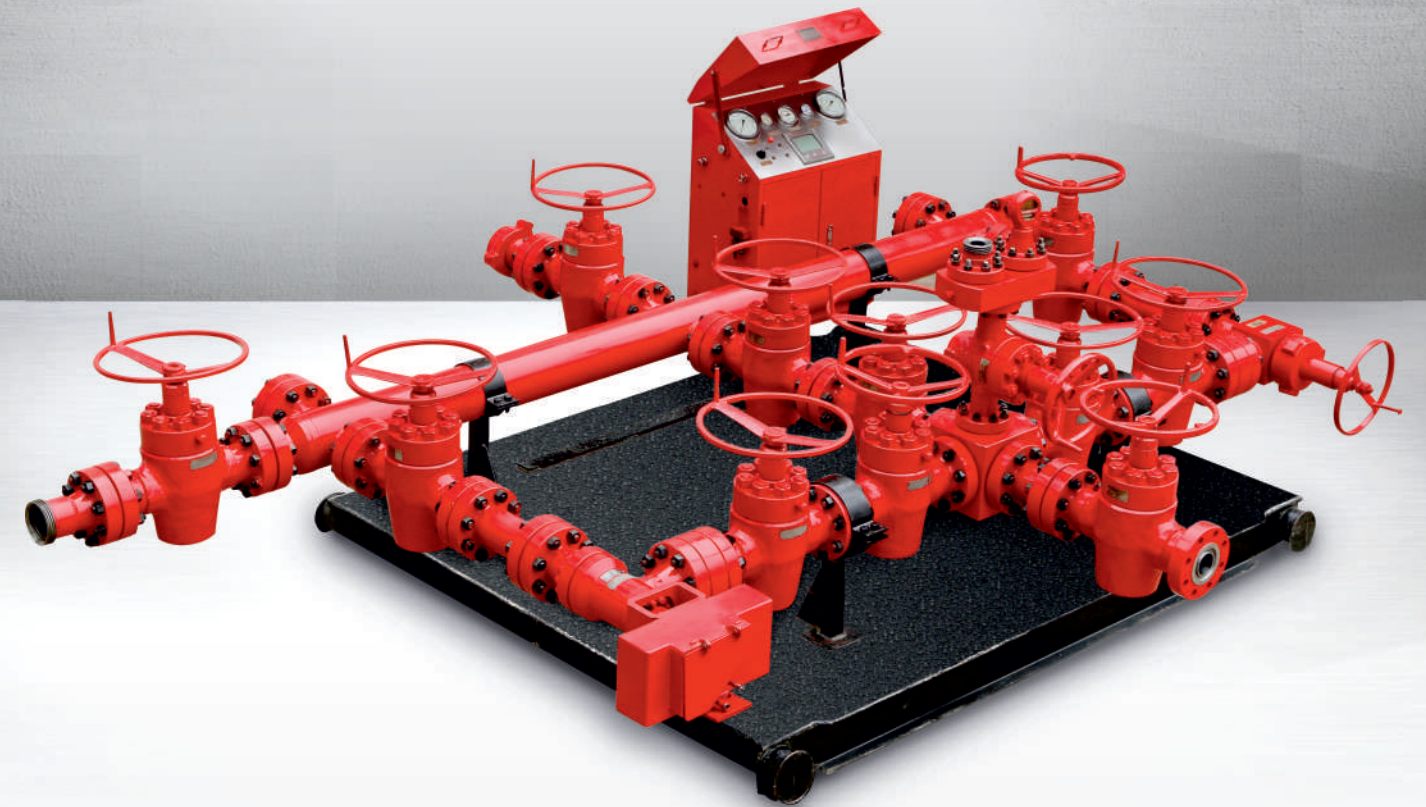
MULTIPLE SAFEGUARDS AGAINST WELL FLUIDS CONTAMINATION

The bonnet incorporates multiple safeguards against the invasion of well fluids into the actuator housing. These safeguards are:

- ♦ Multiple Polypak™ bonnet stem seals
- ♦ Packing integrity port
- ♦ Metal to metal back seat/stem seal
- ♦ Secondary seals



CHOKE & KILL MANIFOLDS





While drilling demands have changed to operate under more extreme temperatures, higher pressure environments, and more severe service applications, one thing remains the same: the need for reliable Pressure control equipment.

Shreeraj's Choke and Kill manifolds perfectly meet the requirements of any operation.

Shreeraj's Choke and Kill Manifold provides control of flow back or treatment fluids. The Choke & Kill Manifold system consists of high pressure Valves, Chokes, Pressure Sensors, Connecting Blocks, Spool Spacers, Buffer Tanks, Flanges & instrumentation configured together. Each system is designed to meet the consumer's specific operational needs and international standards. With a commitment to offer the highest quality, safest & most reliable product on the market.

Shreeraj's Choke and Kill Manifolds undergo design, development and production process that adhere to our rigorous protocol.

Every element of Choke & Kill Manifold, from Gate Valve to Chokes, must meet meticulous design standards, qualification testing & material selection. The manufacturing of each Manifold system is done in-house by our trained employees. This attention to detail is what you can expect from the best-in-class pressure-control equipment provider.

QUALITY

- ◆ Compliance with API Standard 53 and API specifications 16C
- ◆ API 6A monogrammed components
- ◆ Material class DD-0.5 to EE-NL
- ◆ Temperature class L to X (-50 F to 350 F [-45 C to 176 C])
- ◆ Product specification level: PSL 3
- ◆ Inconel@ 625 inlay available on request

RELIABILITY

- ◆ Components including Chokes and Valves are designed & manufactured to rigorous standards to ensure long service life
- ◆ Reduced leaks, repairs and failures contribute to less maintenance and downtime

SAFETY & EASE OF OPERATION

- ◆ Hydraulically actuated components allow for Remote operation
- ◆ Re-certification available onsite, at a customer facility or at a Shreeraj facility

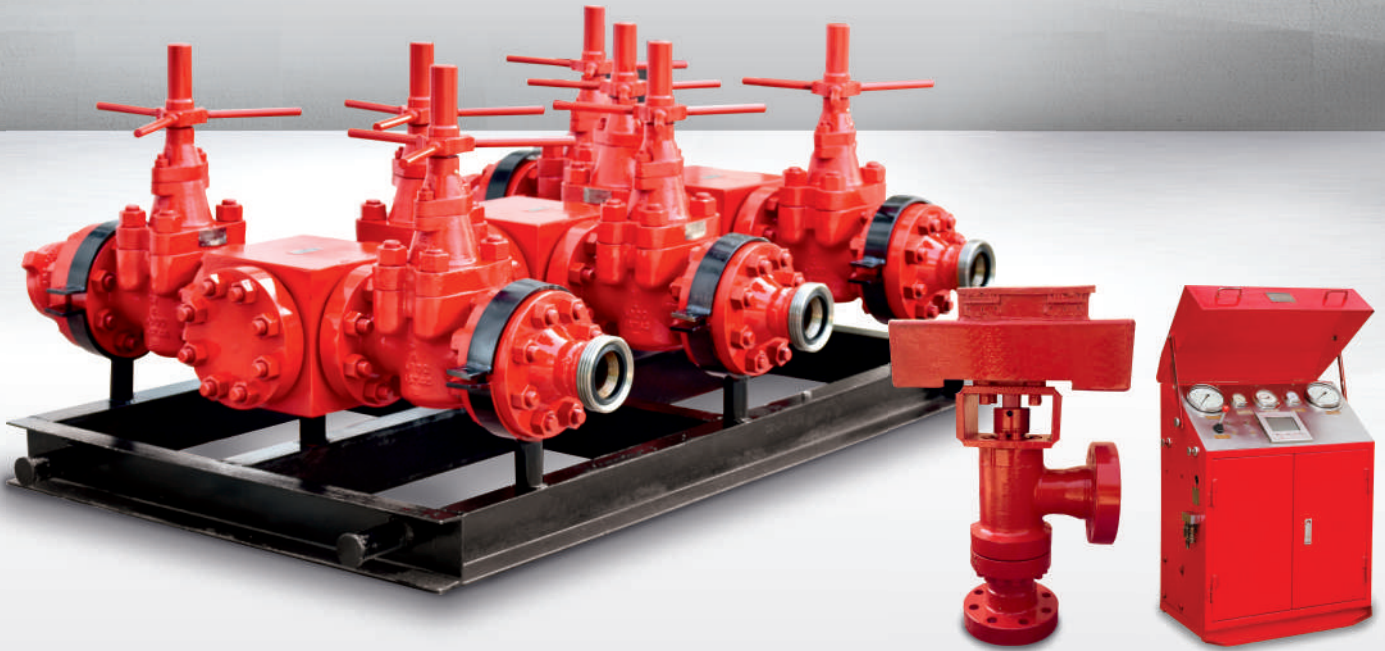
ADVANTAGE

- ◆ Trained employees and staff
- ◆ Certified Drawings, Procedures and Methods
- ◆ Design status and control
- ◆ Documentation and Certification of Conformance
- ◆ Inspection and testing
- ◆ Access to all of Shreeraj's resources & after sales services includes metallurgy, design, welding, engineering, quality, R & D, re-certification and repair support

OPTIONS

- ◆ Standard or custom configurations
- ◆ Instrumentation for pressure readings
- ◆ Ports for glycol injections
- ◆ Various Structural components to operate Chokes and valves

ROTATING DISC DRILLING CHOKE



ROTATING DISC DRILLING CHOKE

Shreeraj introduce Drilling Choke with rotating disc design in current product range, having been supplied to drilling, production and various other applications since 1972. Building upon extensive field experience, Shreeraj offers the Rotating Disc Drilling Choke for drilling services.

Available in 3" normal size

Working Pressure: 10000 psi and 15000 psi as standard

FEATURES AND BENEFITS

- ♦ Disc-type trim design features a 180 degree rotation from open to close
- ♦ Half-moon (or D-shaped) flow area for drilling applications gives accurate control
- ♦ Disc components are made from solid tungsten carbide for maximum durability and may also be rotated in the reverse direction, giving what amounts to a new set of controlling faces, which extends the service life
- ♦ Highly resistant to blockage by allowing large solids to pass through
- ♦ Precise diamond-lapped discs are within two light bands of flatness, ensuring reliable shut-off Performances
- ♦ Differential pressure across the trim provides a strong retention force between the two discs, ensuring Accurate flow rate & reducing the risk of trim vibration
- ♦ Wiping action keeps disc surfaces clean, reducing trim wear and deterioration
- ♦ The choke outlet spool has a replaceable outlet wear sleeve
- ♦ Available in hydraulically & manually operated configurations
- ♦ Actuated configuration with a pneumatic pressure-type position indicator as standard

DRILLING CHOKE

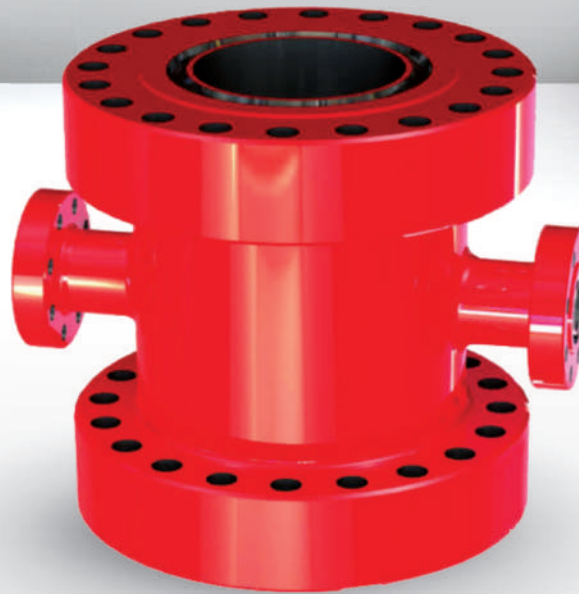
Shreeraj's Drilling Choke product range consists of two main choke type, needle and seat type and the rotating disc type. These chokes control the pressure in the well bore during drilling, circulate out and kicks of gas encountered during drilling and prevent loss of well control by maintaining a satisfactory column of drilling mud. With several options and configurations, Shreeraj's drilling chokes offer proven performance within diverse drilling applications on a global scale.

FEATURES

- ♦ Standpipe pressure gauge
- ♦ Hydraulic pressure gauge
- ♦ Actual choke position gauge(s)
- ♦ Ring air pressure gauge
- ♦ Choke manifold pressure gauge
- ♦ Manual choke control levers
- ♦ Pump stroke counter

DRILLING CHOKE CONTROL PANEL

Shreeraj offers a range of drilling choke control panel to suit various choke types and configurations. The control panel are comprised of a rugged stainless steel enclosure to withstand harsh environments. They require no calibration and little to no maintenance over an extended service life.



Shreeraj Industries design and manufactures Drilling and Spacer Spools in every size & pressure rating.

Drilling Spools have the same size and pressure rating ends and the same size outlets. Shreeraj Industries supplies Drilling Spools with minimum length to provide adequate working space. All Drilling Spools are manufactured as per API 16A spec.

Spacer Spools normally have the same end connections, however Shreeraj Industries can manufacture to customer desired length or can be provided with minimum length to provide adequate working space. Spacer Spools are manufactured as per API 16A and API 6A Spec.

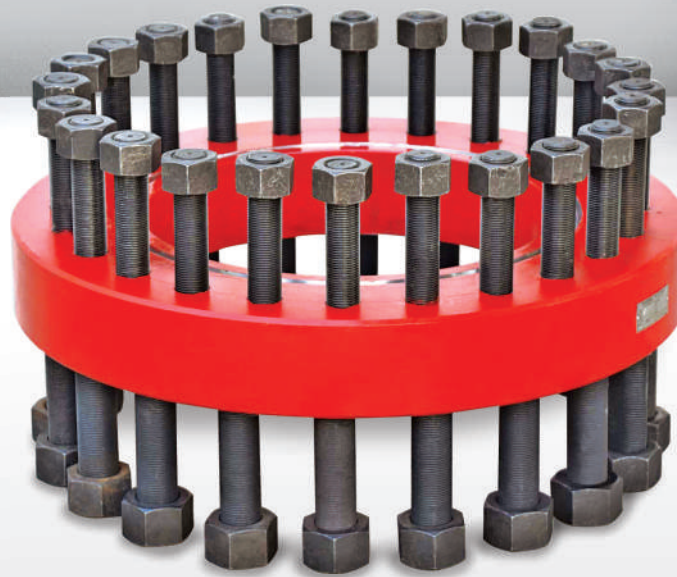
KEY FEATURES

- ♦ Flange, and Studded ends available, in any combination
- ♦ Manufactured for any combination of size and pressure rating
- ♦ Spools designed to minimize length while allowing sufficient clearance for wrenches or clamps, unless otherwise specified by the customer
- ♦ Available for General Service & Sour Service in compliance with any temperature reading and material requirements specified in API 6A Specification
- ♦ Available with Stainless Steel 326 or Inconel 625 corrosion resistance alloy ring grooves
- ♦ Tap-end studs and nuts are normally provided with studded end connections

AVAILABILITY SPECIFICATION

- ♦ Working Pressure : 2000 PSI - 15000 PSI
- ♦ Working Medium : Oil, Natural Gas, Mud
- ♦ Working Temperature : -46°C - 121°C
- ♦ Material Class : AA - HH
- ♦ Specification Class : PSL 1 - PSL4
- ♦ Performance Class : PR1 - PR2
- ♦ Connection : Flanged, WECO Union

DOUBLE STUDDED ADAPTER FLANGES (DSAF)

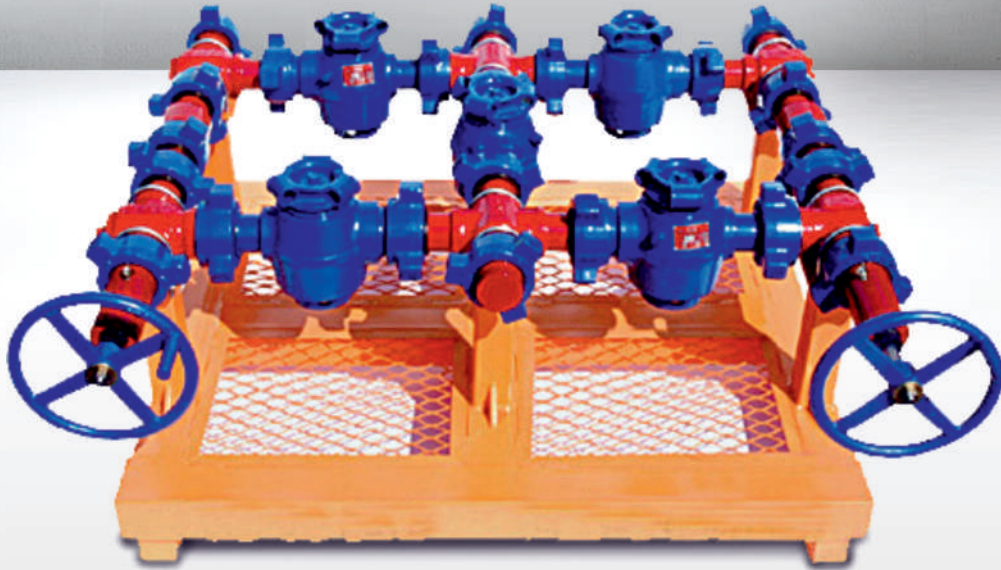


Double Studded Adapter Flange is a combination of Flanges of different size and pressure rating. Shreeraj Industries supplies Double Studded Adapter Flange in various sizes and pressure rating as per customer's specified thickness.

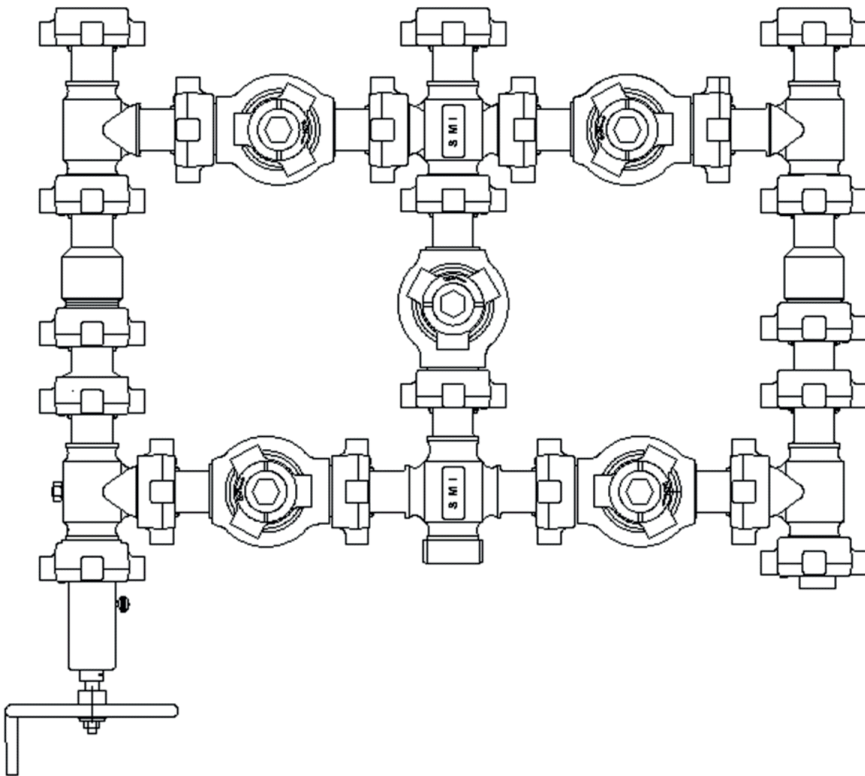
Here is examples of most common DSAF sizes. Custom made combination is welcome.

21.1/4" x 2M to 18.3/4" x 15M
13.5/8" x 5M to 18.3/4" x 15M
13.5/8" x 3M to 16.3/4" x 2M
11" x 5M to 13.5/8" x 5M
7.1/16" x 5M to 13.5/8" x 5M
7.1/16" x 5M to 11" x 5M
4.1/16" x 5M to 3.1/8" x 5M
3.1/16" x 10M to 4.1/16" x 5M
2.1/16" x 10M to 4.1/16" x 5M

20.3/4" x 3M to 18.3/4" x 15M
13.5/8" x 10M to 18.3/4" x 15M
13.5/8" x 10M to 11" x 10M
11" x 15M to 18.3/4" x 15M
7.1/16" x 10M to 13.5/8" x 10M
4.1/16" x 2M to 4.1/16" x 5M
4.1/16" x 5M to 2.1/16" x 5M
3.1/16" x 10M to 4.1/16" x 10M
2.1/16" x 5M to 3.1/8" x 5M



Shreeraj Manifolds are designed & manufactured to customer's requirements such as 4, 7, 8 or 9 valve manifold.



MANIFOLD

5 Valve | 2 Adjustable Choke Valve

- ◆ Cement Manifold
- ◆ Choke Manifold
- ◆ Choke and Kill Manifold
- ◆ Flow back Manifold
- ◆ Well Testing Manifold

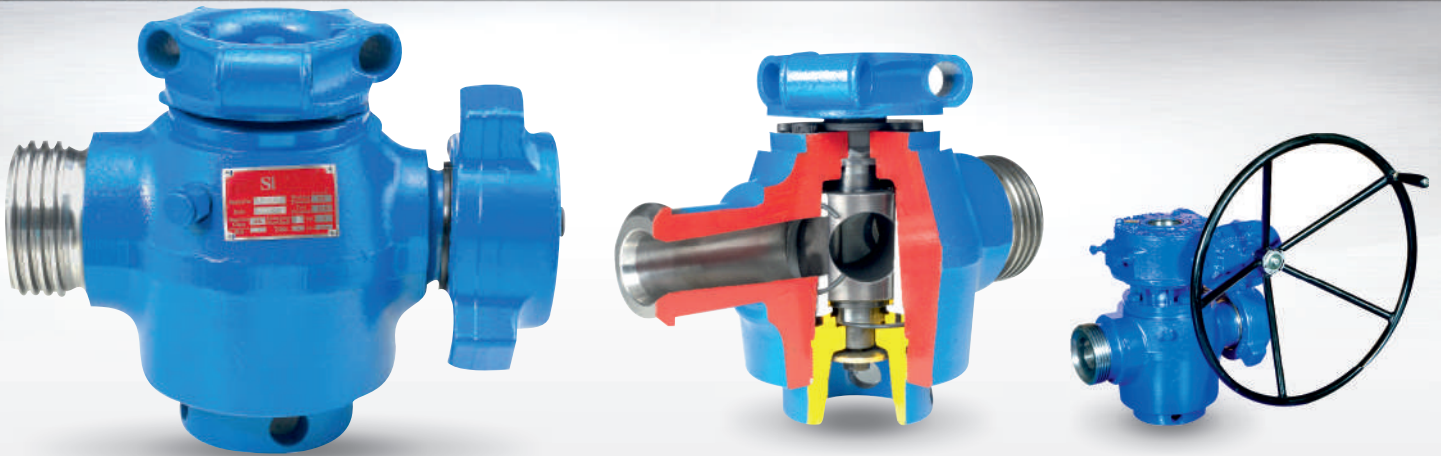
Shreeraj product line offer wide range of hammer union ended equipments.

- ◆ Plug Valves, Adjustable Chokes, Positive Chokes, Forged Tees, Cross, Laterals, Crossovers etc.
- ◆ API 6A flanged ends equipments

FEATURES

- ◆ API 6A PSL 1, 2, 3
- ◆ Standard and H2S service
- ◆ Pressure Tested Assembly
- ◆ Temperature rating L to U
- ◆ Individually pressure tested valves & fittings
- ◆ Full material traceability
- ◆ All API 6A material class available
- ◆ Skid mounted if required
- ◆ Third party approval & certificates on design and manufacturing available

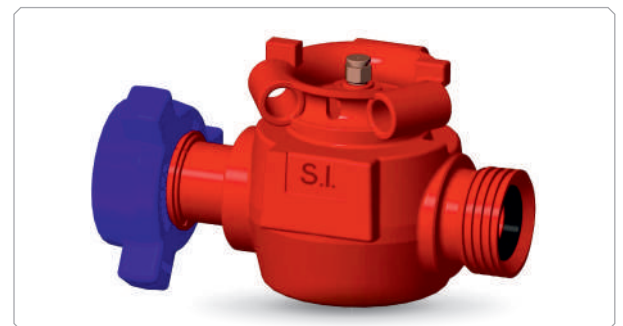
PLUG VALVE



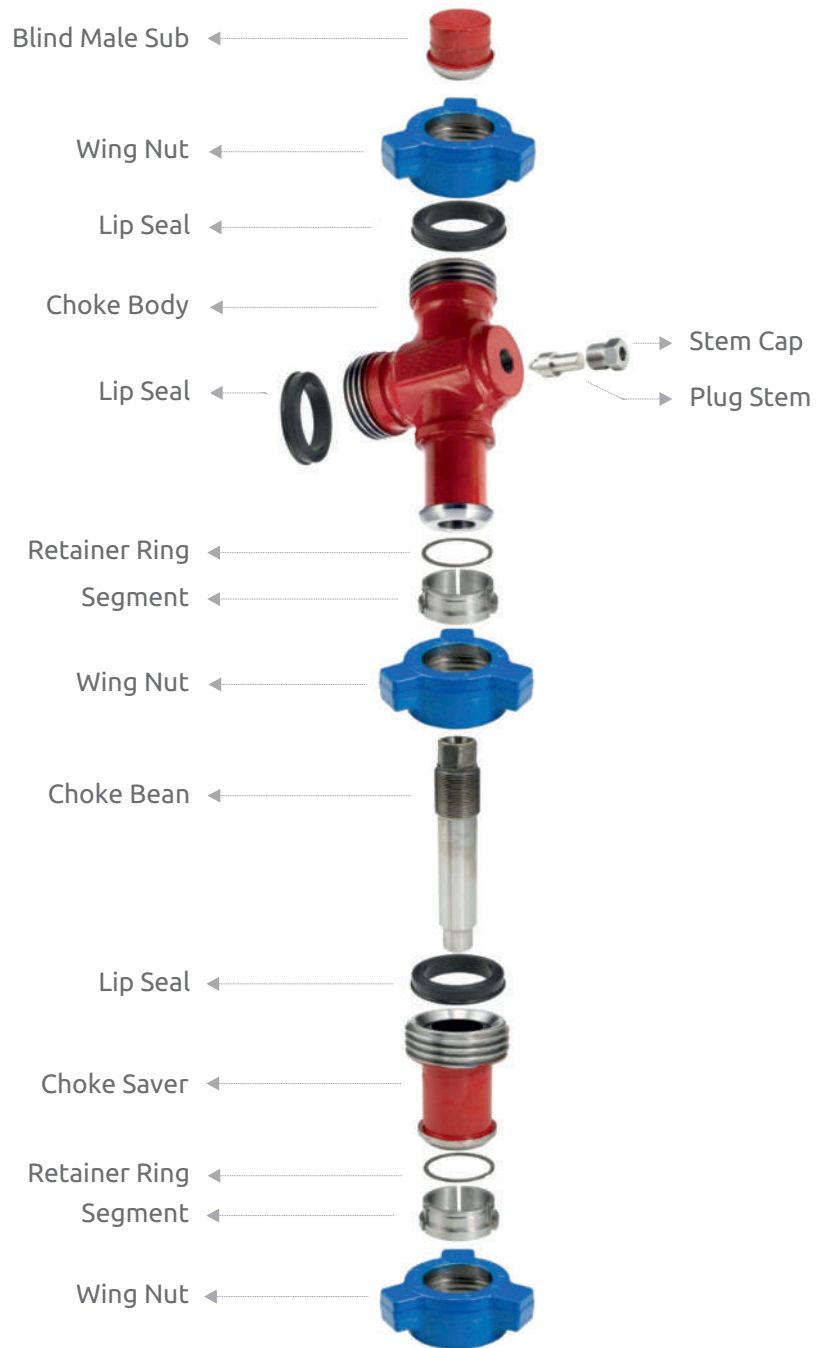
FEATURES

- ◆ Size : 2 x 1, 2 x 2, 3 x 3 in
- ◆ Standard service is used up to 15000psi & tested at 22500psi
- ◆ Rugged construction with forged alloy steel body
- ◆ Standards and H2S service
- ◆ Reliable performance at high working pressure
- ◆ Bottom entry design and easy maintenance
- ◆ Valve parts are interchangeable with major design
- ◆ MTR and Test report are available at any time
- ◆ All API 6A material class available
- ◆ Suitable for variety of high pressure applications such as fracturing, cementing, acidizing & others
- ◆ Each valve is serialized & pressure tested at 1.5 times NSCWP

TOP ENTRY OPTION AVAILABLE



POSITIVE CHOKE VALVE



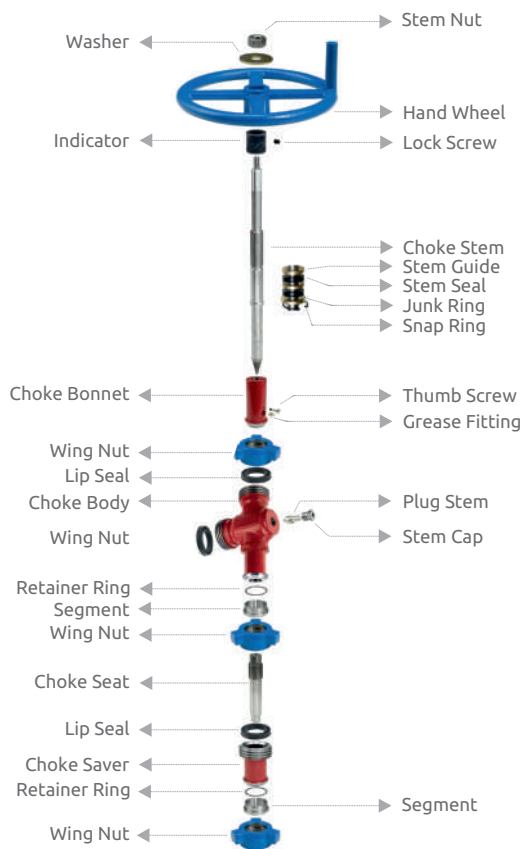
FEATURES

- ♦ 2" Fig 1502 MxF with 3/4", 1" Orifice and 3" Fig 1502 MxF with 2" Orifice
- ♦ Standard service is used up to 15000psi and tested at 22500psi
- ♦ H2S service is used up to 10000psi and tested at 22500psi
- ♦ Hammer Union End Connection
- ♦ Forged alloy steel body, stainless steel and tungsten carbide parts
- ♦ Parts are interchangeable with major brands
- ♦ Suitable for a broad range of applications including wellhead, production manifolds, well testing, injections, choke and kill manifolds and well clean operations, etc.

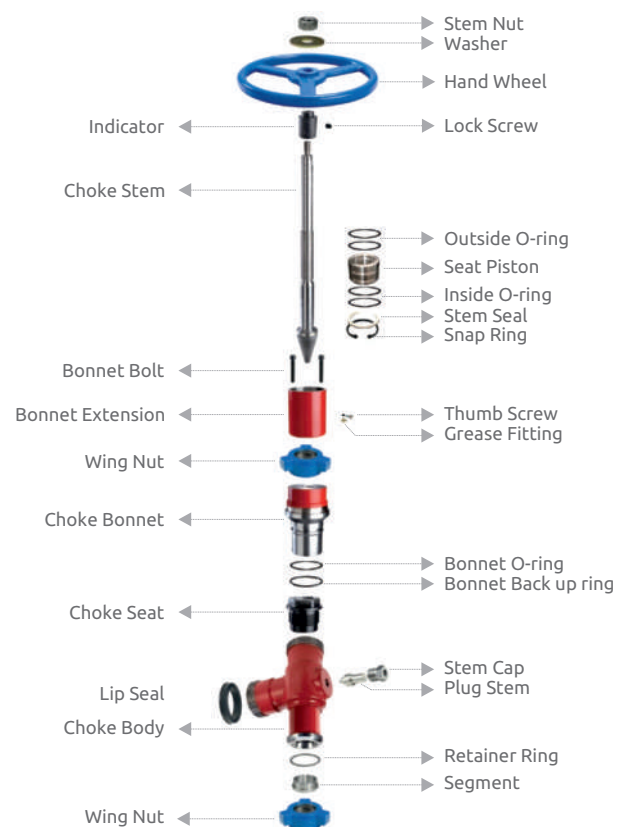
ADJUSTABLE CHOKE VALVE



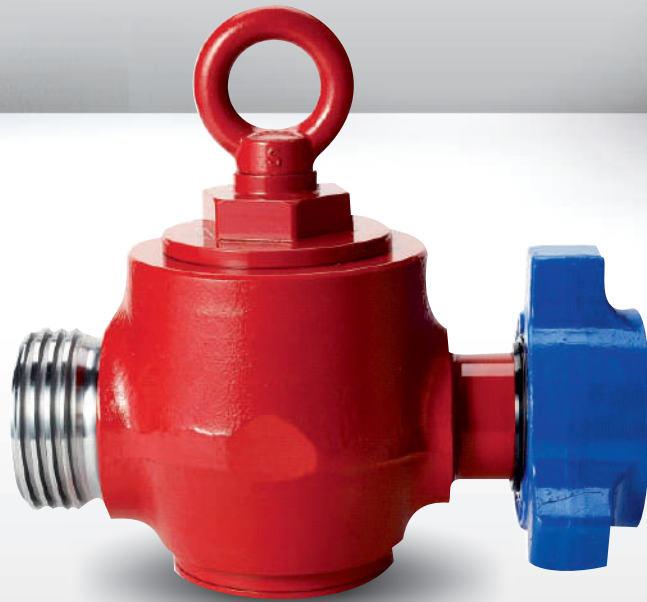
2" ADJUSTABLE CHOKE



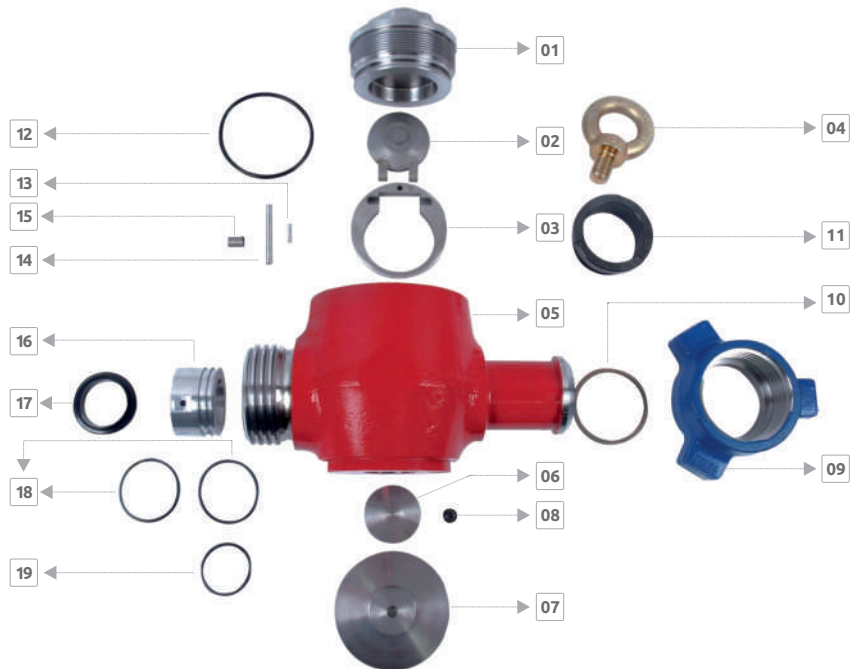
3" ADJUSTABLE CHOKE



CHECK VALVE



01	BODY CAP
02	SEAT COVER BODY
03	SEAT COVER
04	I-BOLT
05	BODY
06	PLUG
07	PLUG CAP
08	CAP SCREW
09	WING NUT
10	RETAINER RING
11	SEGMENT
12	BODY CAP O-RING
13	SEAT PIN
14	SEAT COVER PIN
15	SPRING
16	SEAT
17	LIP SEAL
18	SEAT O-RING
19	PLUG O-RING



FEATURES

- ◆ Size : 2 in
- ◆ Standard service is used up to 15000psi and tested at 22500 psi
- ◆ H2S service is used up to 10000psi and tested at 22500 psi
- ◆ Valve parts are interchangeable with major designs
- ◆ Reliable performance at high working pressure
- ◆ MTR and Test reports are available at any time
- ◆ Suitable for variety of high pressure applications such as fracturing, cementing, acidizing and others etc.



- ◆ Shreeraj Pup joints are available for 2" & 3" of normal pipe size for CWP 15000psi
- ◆ Fig 602 & 1002 options available
- ◆ 4" of normal pipe sizes are available upon request

FIGURE 1002/1502 NPST

15000 PSI FOR STANDARD SERVICE, 10000PSI FOR H2S SERVICE

SIZE	UNION END	CWP	AVAILABLE LENGTH										
			1 FT	2 FT	3 FT	4 FT	5 FT	6 FT	8 FT	10 FT	12 FT	15 FT	20 FT
2"	1502 MxF	15000psi	1 FT	2 FT	3 FT	4 FT	5 FT	6 FT	8 FT	10 FT	12 FT	15 FT	20 FT
3"	1502 MxF	15000psi	1 FT	2 FT	3 FT	4 FT	5 FT	6 FT	8 FT	10 FT	12 FT	15 FT	20 FT

FIGURE 1502 INTEGRAL

15000 PSI FOR STANDARD SERVICE, 10000PSI FOR H2S SERVICE

SIZE	UNION END	CWP	AVAILABLE LENGTH										
			1 FT	2 FT	3 FT	4 FT	5 FT	6 FT	8 FT	10 FT	12 FT	15 FT	20 FT
2"	1502 MxF	15000psi	1 FT	2 FT	3 FT	4 FT	5 FT	6 FT	8 FT	10 FT	12 FT	15 FT	20 FT
3"	1502 MxF	15000psi	1 FT	2 FT	3 FT	4 FT	5 FT	6 FT	8 FT	10 FT	12 FT	15 FT	20 FT

Each size can change as per customer's requirement

LONG RADIUS SWIVEL JOINT



- ◆ Size : 2" - 3"
- ◆ End Type : MxM, MxF
- ◆ Service : Standard (15000psi) H2S (10000psi)
- ◆ Style : 10, 20, 30, 40, 50, 60, 80, 100



FEATURES

- ◆ Standard service is used up to 15000psi & tested at 22500psi
- ◆ H2S service is used up to 10000psi & tested at 15000psi
- ◆ All styles are available in normal size 2" & 3" with 1502 union ends
- ◆ Forged alloy steel elbows with heat treatment
- ◆ Each product is serialized and pressure tested at 1.5 times NSCWP
- ◆ MTR and test report are available at any time
- ◆ For high pressure applications - fracturing, cementing & circulating hoses, acidizing, choke & kill lines & test line etc.

SHORT RADIUS SWIVEL JOINT



- ✦ Size : 2" - 3"
 - ✦ End Type : Customized
 - ✦ Test Pressure : 9000 psi
 - ✦ CWP : 6000psi
 - ✦ MTR & Test report are offered at any time
 - ✦ Service : Standard, H2S
 - ✦ Used for : Cementing, Drill Mud Fracturing Fluids, Well servicing
 - ✦ Style : 10, 20, 30, 40, 50, 60, 80, 100
-
- ✦ 2" & 3" up to CWP 6000psi with API line pipe threads
 - ✦ Suitable for water lines, cementing & circulating hoses, mud lines, choke & kill lines and test line, etc.
 - ✦ Female thread end connection
 - ✦ Each product is serialized & pressure tested at 1.5 times NSCWP
 - ✦ MTR & test report are available at any time





- Hammer Union are manufactured by steel forging using materials appropriate to specific pressure rating
- Hammer Union are available in a choice of end connections. API line pipe threads are standard. Butter weld ends can be provided. Customer need to specify schedule of pipe while ordering
- H2S service is available and all H2S service parts of union confirm to the latest NACE specifications
- Hammer union components of same size & figure number are WECO interchangeable
- Hammer union nuts have three hammer lugs
- Hammer unions for low-pressure services (Fig 100 - Fig 200) feature a primary metal-to-metal seal. This metal-to-metal seal remains leak-proof even when one surface is slightly pitted or misaligned.
- Hammer unions for medium-pressure services (Fig 400 - Fig 600) designs supplement the metal-to-metal seal with a resilient O-ring extends union life and protects the metal-to-metal seal against corrosion.
- Hammer unions for high pressure services (fig 602 - 2202) design with resilient seal extend union life. WITON option available for H2S services.

FIG 100



SIZE	END
2"	THD.
3"	THD.
4"	THD.
6"	THD.
8"	THD.
10"	THD. B/W

FIG 200/206



SIZE	END
1"	THD.
2"	THD. B/W
3"	THD. B/W
4"	THD. B/W
6"	THD. B/W
8"	THD.
10"	THD. B/W

FIG 400



SIZE	END
2"	THD.
3"	THD.
4"	THD.

FIG 602



SIZE	END
1"	THD. B/W
2"	THD. B/W
3"	THD. B/W
4"	THD. B/W

FIG 1002



SIZE	END
1"	THD. B/W
2"	THD. B/W
3"	THD. B/W
4"	THD. B/W
5"	THD.

FIG 1502



SIZE	END
1"	THD. B/W
2"	THD. B/W
3"	THD. B/W
4"	THD. B/W

FIG 2202



SIZE	END
2"	B/W
3"	B/W



CEMENTING AND CIRCULATING

10000 PSI & 15000 PSI HOSE ▶

6000 PSI HOSE ▶



SIZE	CWP	SWIVEL JOINT STYLE
2"	15000psi	Long Radius Style 50 & Style 10
		Long Radius Style 50 & Style 50
3"	15000psi	Long Radius Style 50 & Style 10
		Long Radius Style 50 & Style 50
2"	6000psi	Short Radius Style 50 & Style 10
		Short Radius Style 50 & Style 50
Both size available in 8ft, 10ft and 12ft		

- ✦ Shreeraj Cementing Hose Loops are available for 2" & 3" of normal pipe size
- ✦ Shreeraj Cementing Hose Loop are made for Standard and H2S service
- ✦ Suitable for Cementing & Circulating lines, Water lines, Well testing lines etc.
- ✦ Long radius Cementing Hose Loop are suitable for pressures up to 15000psi
- ✦ Short radius Cementing Hose Loop are suitable for pressures up to 6000psi
- ✦ Style of Cementing Hose Loop are customized

INTEGRAL FITTING / ADAPTER



CROSS



ELBOW



PLUG



TEE FXFXM



CROSS OVER



PLUG



TEE FXMXM



BLAST JOINT

- ✦ Fittings are available for 2" & 3" normal pipe size, fittings for 4" normal pipe size are customized
- ✦ All fittings are available for standard & H2S service

OUR GLOBALLY FOOTPRINTS



OUR GROWTH PARTNER



WORKS : Block No. : 707 / A-2, Nandoli - Patia Road, Village : Rancharda - 382115, Taluka : Kalol, District : Gandhinagar, Gujarat - India. +91 94087 04749 | +91 99094 43680

OFFICE : 1224, Shivalik Satyamev, Nr. Vakil Saheb Overbridge, Ambli Bopal Junction, Bopal, Ahmedabad - 380 058, Gujarat - India. +91 271 746 4045
info@shreerajindia.com | www.shreerajindia.com